



ANLY CONTROLLER

AEFR DIGITAL FREQUENCY RELAY



CHARACTERISTIC :

- Digital frequency display and fault detection
- Over frequency (50Hz~99Hz) and under frequency (10Hz~60Hz) detection
- Over and under frequency delay, from 1s to 10s
- Manual or auto reset, auto reset delay from 1s to 10s
- Over or under frequency bypass possible
- Crystal oscillator and digital IC for high precision, frequency resolution under 0.1Hz

SPECIFICATION :

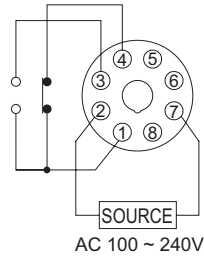
Operating voltage	AC(V): 100 ~ 240
Allowable operating voltage range	85~110% of rated operating voltage
Rated frequency	50 / 60 Hz
Detecting range	10 ~ 99Hz
Display	Display resolution ± 0.1 Hz
Contact rating	250VAC 5A (resistive load)
Power consumption	Approx. 3VA
Life	Mechanical: 5,000,000 times Electrical: 100,000 times
Ambient temperature	-10 ~ +50°C
Ambient humidity	MAX 85%RH
Weight	Approx. 130g

TYPE SELECTION :

Model	Standard		Interval	
Type	AEFR-N	AEFR-Y	AEFR-NI	AEFR-YI
Mounting type	Surface Mounting	Flush Mounting	Surface Mounting	Flush Mounting
Output contact	1C	1C	1C	1C
Frequency range	10 ~ 99 Hz	10 ~ 99 Hz	10 ~ 99 Hz	10 ~ 99 Hz

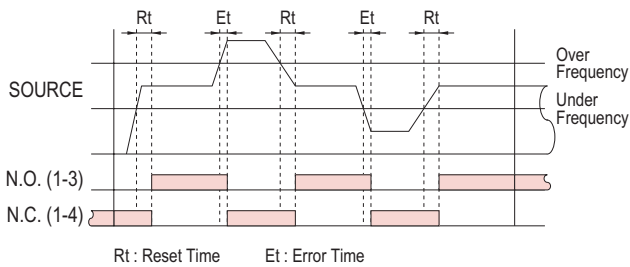
Product is subject to change without notice.

CONNECTION :

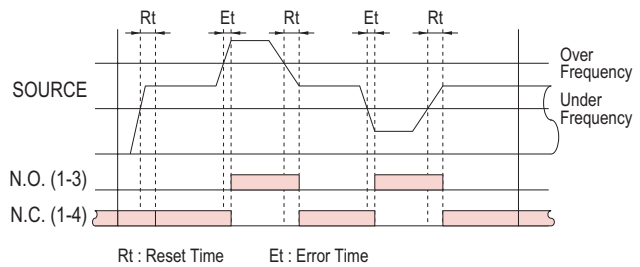


TIMING CHART :

AEFR-□

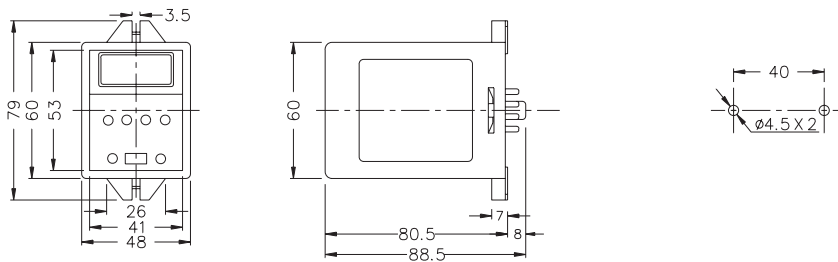


AEFR-□I

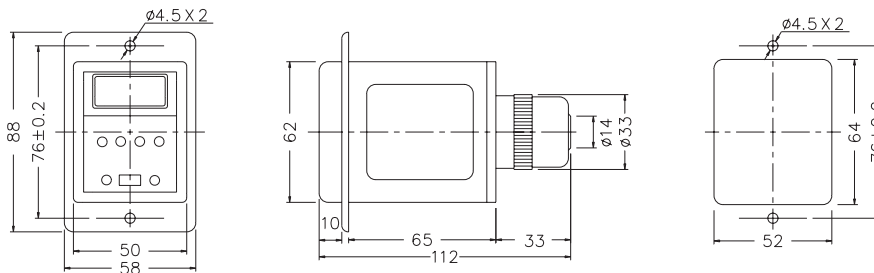


DIMENSIONS : (mm)

N type(Surface Mounting): Using 8PFA Socket



Y type(Flush Mounting): Using US-08 Socket or P3G-08 Socket



ANLY ELECTRONICS CO., LTD.

<http://www.anly.com.tw>

TAIWAN MAIN OFFICE : ANLY ELECTRONICS CO., LTD.

No.19, Lane 202, Fushou St., Shinjuang City, Taipei, Taiwan 242
TEL: +886-2-2996-3202 FAX: +886-2-2996-2017

MALAYSIA BRANCH : JUSTY ELECTRONICS (M) SDN, BHD.

No.1, Jalan 6/89B, Kawasan Perindustrian Trisegi, Batu 3 1/2 Off Jalan Sungei Besi, 57100 Kuala Lumpur, Malaysia
TEL: +60-3-7983-5758 FAX: +60-3-7981-5052

HONG KONG BRANCH : ANLY ELECTRONICS (HK) LTD.

Flat K, 13/F, Edward Mansion, 141 Prince Edward Road W., Kowloon, Hong Kong
TEL: +852-2397-2505 FAX: +852-2397-6080

SHANGHAI BRANCH : ANLY TECHNOLOGY (WUXI) CO., LTD.

Room 13G, No.831, Xinzha Rd., Jingan District, Shanghai, China 200041
TEL: +86-21-6218-3300 FAX: +86-21-6217-5911

NO. AEFR-G-A