



ANLY CONTROLLER

AG4Q-H EXCHANGE RELAY



CHARACTERISTIC :

AG4Q-H, AG4Q-H3, AG4Q-HC, AG4Q-HC1

- Dual motors alternating is possible (when in AUTO mode)
- Single motor operation, motor selectable (when in MANUAL mode)

AG4Q-HS

- 1-3 input contact for motor-alternating signal
- Customized specification available

SPECIFICATION :

Operating voltage	AC(V): 12, 24, 110, 220, 240
Allowable operating voltage range	85~110% of rated operating voltage
Rated frequency	50 / 60 Hz
Contact rating	250VAC 5A (resistive load)
Reset time	MAX 0.3S
Power consumption	Approx. 3VA
Life	Mechanical: 5,000,000 times Electrical: 100,000 times
Ambient temperature	-10 ~ +50°C (without condensation & freezing)
Ambient humidity	MAX 85% RH (without condensation)
Altitude	MAX 2000m
Weight	Approx. 210g

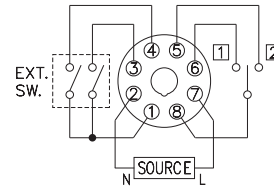
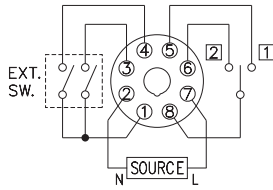
TYPE SELECTION :

Type	AG4Q-H,-HC,-HC1	AG4Q-H3	AG4Q-HS
Output contact(8-5,8-6)	1a , 1a	1a , 1a	1a , 1a
Input detect delay	3S	immediate	200mS
Single contact exchange operating(1-3)	○	○	○(pulse)
Dual contact operating(1-4)	○	○	- - - -
Exchange operating (AUTO / MANUAL)	○	○	- - - -

CONNECTION :

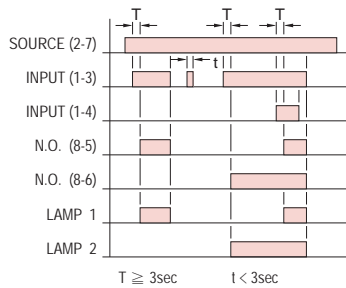
AG4Q-H,AG4Q-H3,AG4Q-HS

AG4Q-HC,AG4Q-HC1

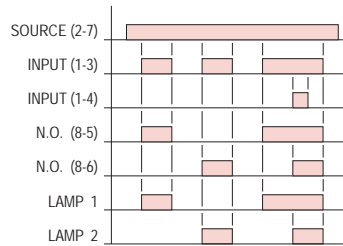


TIMING CHART :

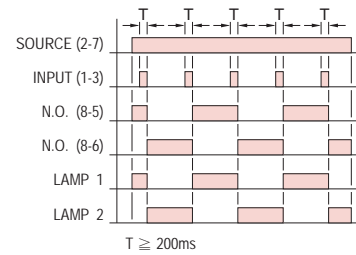
AG4Q-H



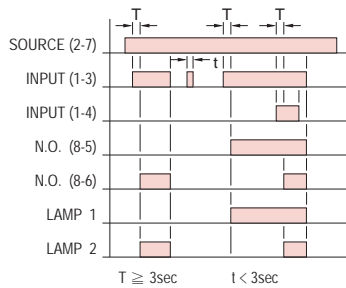
AG4Q-H3



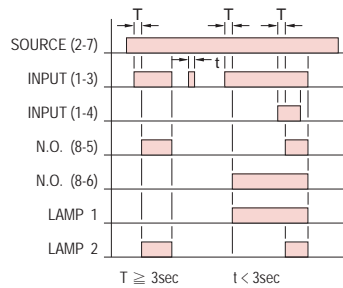
AG4Q-HS



AG4Q-HC

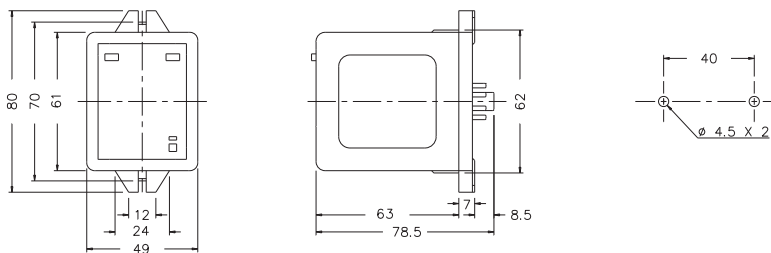


AG4Q-HC1



DIMENSIONS : (mm)

N type(Surface Mounting): Using 8PFA Socket



Tolerance: ± 0.1

ANLY ELECTRONICS CO., LTD.

<http://www.anly.com.tw>

TAIWAN MAIN OFFICE : ANLY ELECTRONICS CO., LTD.

No.19, Lane 202, Fushou St., Xinzhuang Dist., New Taipei City 242, Taiwan
TEL: +886-2-2996-3202 FAX: +886-2-2996-2017

HONG KONG OFFICE : ANLY ELECTRONICS (HK) LTD.

Flat K, 13/F, Edward Mansion, 141 Prince Edward Road W., Kowloon, Hong Kong
TEL: +852-2397-2505 FAX: +852-2397-6080

CHINA OFFICE : ANLY TECHNOLOGY (WUXI) CO., LTD.

2F, Building A, Plot 1, No. 28, Zhanhong Rd., Xinwu Dist., Wuxi, Jiangsu, P.R.China
TEL: +86-510-85304801~3

MALAYSIA OFFICE : JUSTY ELECTRONICS (M) SDN. BHD.

No.1, Jalan 6/89B, Kawasan Perindustrian Trisegi, Batu 3 1/2 Off Jalan Sungei Besi, 57100 Kuala Lumpur, Malaysia
TEL: +60-3-7983-5758 FAX: +60-3-7981-5052

INDONESIA OFFICE : PT. ANLY ELECTRONICS INDONESIA

Jl. Pangeran Jayakarta 117/B9, Jakarta Pusat, 10730 Indonesia
TEL: +62-21-624-8436 FAX: +62-21-626-1228

NO. AG4QH-W-A