



ANLY CONTROLLER

APR-4S 3-PHASE SEQUENCE PROTECTION RELAY



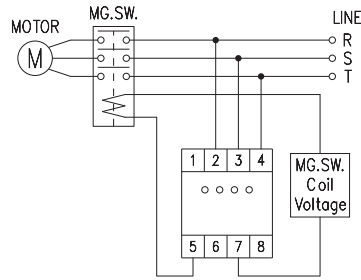
CHARACTERISTIC :

- 3-phase voltage and fault detector
- Can detect abnormal condition to prevent damages to the equipments
- Out-of-phase detection while the motor operating
- Install on DIN rail or fix with screw are available and no socket require

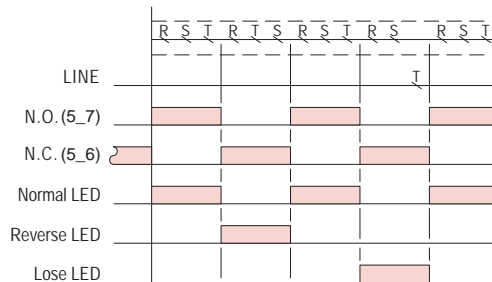
SPECIFICATION :

Operating voltage	AC(V) : 208~380, 380~480
Allowable operating voltage range	+20% , -20%
Rated frequency	50 / 60 Hz
Contact rating	250VAC 5A resistive load
Reset time	MAX 3sec
Power consumption	Approx. 2VA(AC 220V 60Hz)
Life	Mechanical: 5,000,000 times Electrical: 100,000 times
Ambient temperature	-10 ~ +50°C (without condensation & freezing)
Ambient humidity	MAX 85% RH (without condensation)
Altitude	MAX 2000m
Weight	Approx. 106g

CONNECTION :

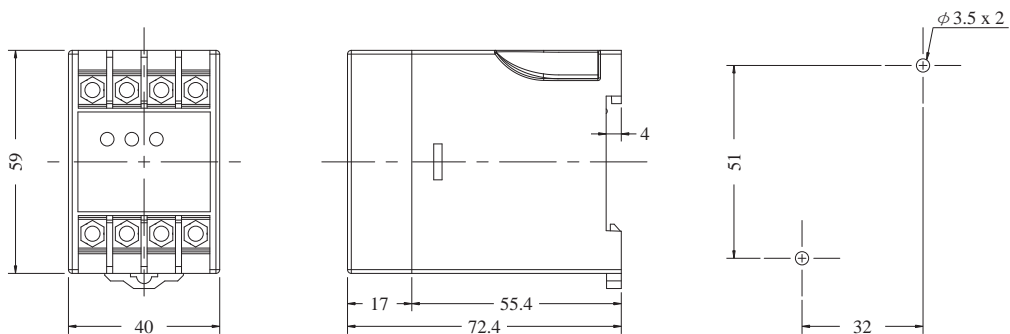


TIMING CHART :



DIMENSIONS : (mm)

N type(Surface Mounting):



Tolerance: ± 0.1

ANLY ELECTRONICS CO., LTD.

<http://www.anly.com.tw>

TAIWAN MAIN OFFICE : ANLY ELECTRONICS CO., LTD.

No.19, Lane 202, Fushou St., Xinzhuang Dist., New Taipei City 242, Taiwan
TEL: +886-2-2996-3202 FAX: +886-2-2996-2017

HONG KONG OFFICE : ANLY ELECTRONICS (HK) LTD.

Flat K, 13/F, Edward Mansion, 141 Prince Edward Road W., Kowloon, Hong Kong
TEL: +852-2397-2505 FAX: +852-2397-6080

CHINA OFFICE : ANLY TECHNOLOGY (WUXI) CO., LTD.

2F, Building A, Plot 1, No. 28, Zhanhong Rd., Xinwu Dist., Wuxi, Jiangsu, P.R.China
TEL: +86-510-85304801~3

MALAYSIA OFFICE : JUSTY ELECTRONICS (M) SDN. BHD.

No.1, Jalan 6/89B, Kawasan Perindustrian Trisegi, Batu 3 1/2 Off Jalan Sungei Besi, 57100 Kuala Lumpur, Malaysia
TEL: +60-3-7983-5758 FAX: +60-3-7981-5052

INDONESIA OFFICE : PT. ANLY ELECTRONICS INDONESIA

Jl. Pangeran Jayakarta 117/B9, Jakarta Pusat, 10730 Indonesia
TEL: +62-21-624-8436 FAX: +62-21-626-1228

NO.APR4S-W-A